



Architectural Design

Copyright

Copyright © 2007 Objet Geometries Ltd. All rights reserved.

This documentation contains proprietary information of Objet Geometries Ltd. This information is supplied solely to assist authorized users of the Objet system. No part of this document may be used for other purposes, and it may not be disclosed to other parties.

The specifications on which this document is based are subject to change without notice.

No part of this book may be reproduced in any form or by any means, nor stored in a database or retrieval system, without prior permission in writing from Objet Geometries Ltd.

If this document is distributed as a PDF file, you may print it for internal use.

Trademarks

The following are registered trademarks of Objet Geometries Ltd.: Objet®, FullCure®.

The following are trademarks of Objet Geometries Ltd.: Eden, Eden500V, Eden350V, Eden350, Eden330, Eden260, Eden250, PolyJet, PolyLog, Objet Studio, Job Manager, TangoBlack, TangoGray, VeroBlue, VeroWhite, VeroBlack.

All names of products and services cited in this book are trademarks or registered trademarks of their respective companies.

Limitation of Liability

The product, software or services are being provided on an “as is” and “as available” basis. Except as may be stated specifically in your contract, Objet Geometries Ltd. expressly disclaims all warranties of any kind, whether express or implied, including, but not limited to, any implied warranties of merchantability, fitness for a particular purpose and non-infringement.

You understand and agree that Objet Geometries Ltd. shall not be liable for any direct, indirect, incidental, special, consequential or exemplary damages, including but not limited to, damages for loss of profits, goodwill, use, data or other intangible losses (even if Objet has been advised of the possibility of such damages), resulting from: (i) the use or the inability to use the product or software; (ii) the cost of procurement of substitute goods and services resulting from any products, goods, data, software, information or services purchased; (iii) unauthorized access to or alteration of your products, software or data; (iv) statements or conduct of any third party; (v) any other matter relating to the product, software, or services.

The text and drawings herein are for illustration and reference only. The specifications on which they are based are subject to change. Objet Geometries Ltd. may, at any time and without notice, make changes to this document. Objet Geometries Ltd., for itself and on behalf of its subsidiaries, assumes no liability for technical or editorial errors or omissions made herein, and shall not be liable for incidental, consequential, indirect, or special damages, including, without limitation, loss of use, loss or alteration of data, delays, or lost profits or savings arising from the use of this document.

OBJET GEOMETRIES LTD.

P.O. Box 2496

Rehovot 76124

Israel

Tel: +972-8-931-4314

Fax: +972-8-931-4315

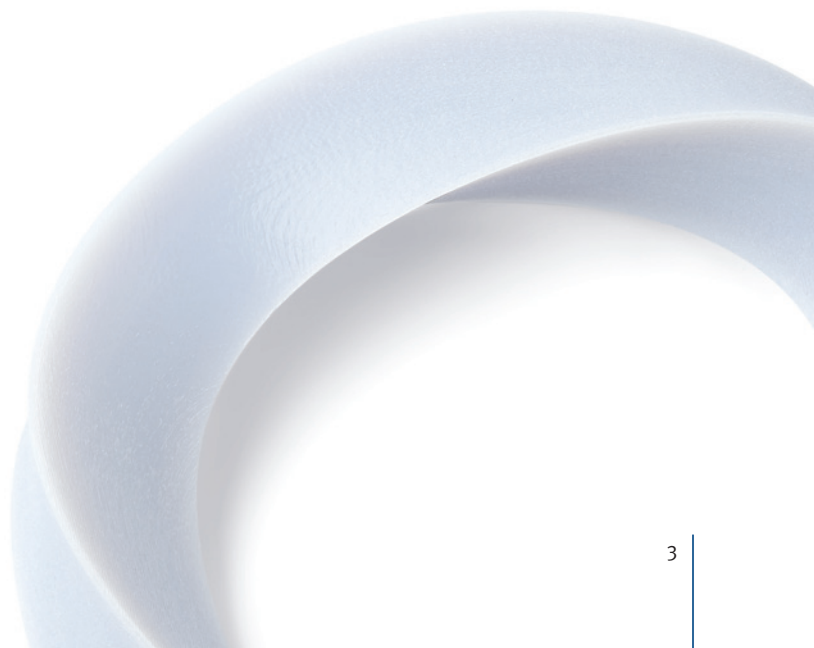
<http://www.2objet.com>

Revised March 2007

1

About This Applications Guide

Using This Guide.....	1-3
For More Information.....	1-3
Terms Used in This Guide.....	1-3



Using This Applications Guide

This applications guide provides instructions for designing and planning architectural models, creating architectural STL files and preparing and printing architectural files using Objet 3D printing systems. It explains how to use features and small details and provides practical examples to guide you as you design architectural models.

For More Information

Visit <http://www.2objet.com/> for more details about Objet's technology and products and for applications information.

Terms Used in This Guide

STL – The file format used for printing 3D models

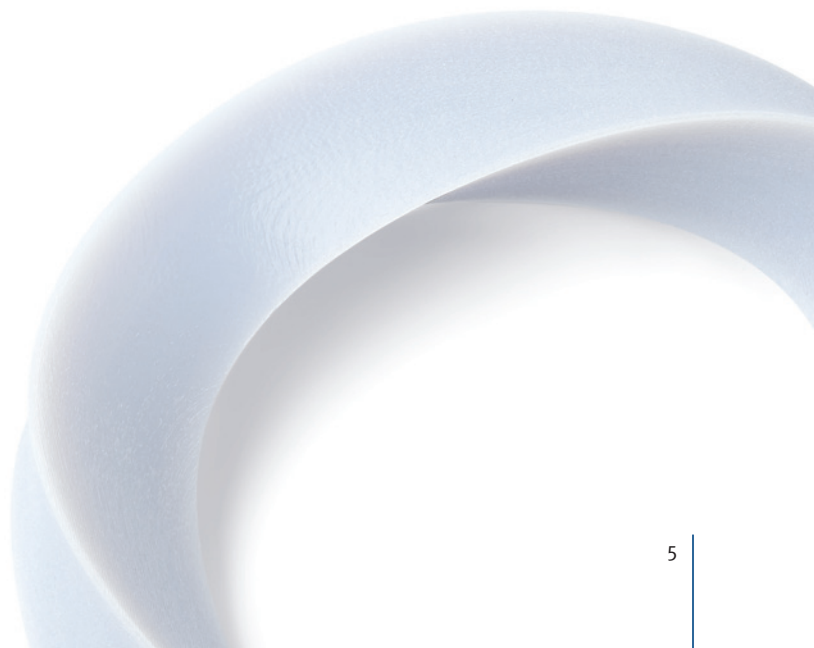
Model material – Material used for building models

Support material – Material used for supporting the structure of models during printing



Introduction

3D Printing of Architectural Applications.....	2-5
Architectural Software	2-5
Format Specifications	2-5
Preparation of an External File from CAD.....	2-6



3D Printing of Architectural Applications

Printing 3D architectural models is a distinctive application that comes with a unique set of advantages and limitations that are typical to this niche application. This method will become increasingly popular as people become aware of the great time-savings that it offers in the design phase. The greatest advantage in the printing of 3D architectural models is that it reduces the number of steps needed to create models, thus minimizing design time, yet it can produce the fine details of a final architectural plan.

Computer simulations have been used in engineering and architecture for a long time. However, visualization of buildings was traditionally done using scale models made of wood or foam board. This allowed architects to see the building in a three-dimensional format so that obvious problems would be revealed and could be rectified. But this method was very cumbersome and time consuming. In comparison, the advantages of Objet's new cutting-edge technology are obvious.

Printing 3D architectural models using an Objet 3D printing system requires an understanding of the concepts and processes of architectural design, including notions of scale, proportion, space, form, and structure.

Architectural Software

Objet 3D printers print three-dimensional models of architectural designs using solid image design tools, such as Solid Works®, Pro-E®, Unigraphics®, AutoCAD®, and 3D Studio MAX/VIZ® used for 2D/3D architectural design in STL format.

Although many architects use AutoCAD and 3D Studio MAX/VIZ for their 2D/3D architectural designs, this applications guide will focus on the format specifications and tips for proper design, rather than on the software itself.

Format Specifications

STL is the abbreviation for Standard Triangulation Language. The principle of this file type is simple: every object is formed from a collection of surfaces and each surface can be described as a collection of triangles. For instance, a square can be described as 2 triangles. A cube can be formed from 6×2 triangles = 12 triangles. Curved surfaces require more triangles. When the tolerance of the surface is high, i.e. when the surface should be very smooth, more triangles are required, resulting in heavy files. Small STL files will give rougher descriptions.

STL is frequently used in rapid prototyping and most of the CAD systems can export STL files. More and more applications have begun to use STL files. This software is an example of the expansion of the use of STL files which was originally developed for use in RP applications. The tooling module has made it possible to design molds out of the STL description of an object.

The ASCII.STL file must start with the lower case keyword 'solid' and end with 'end-solid'. Between these keywords are listings of individual triangles that define the faces of the solid model. Each individual triangle description defines a single normal vector directed away from the solid's surface followed by the X-Y-Z components for all three of the vertices. These values are in Cartesian coordinates and are floating point values. The triangle values should all be positive and contained within the building volume. For this project the values are 0 to 14 inches in the X vertex, 0 to 10 in the Y, and 0 to 12 in the Z.

Preparation of the External File from CAD

The following is a list of the steps that should be taken in order to prepare the external file for use by the Objet 3D printer, and subsequently to prepare the selected model for printing. There are slight variations between the different solid image design programs in which external files are prepared. These instructions, however, apply to all programs.

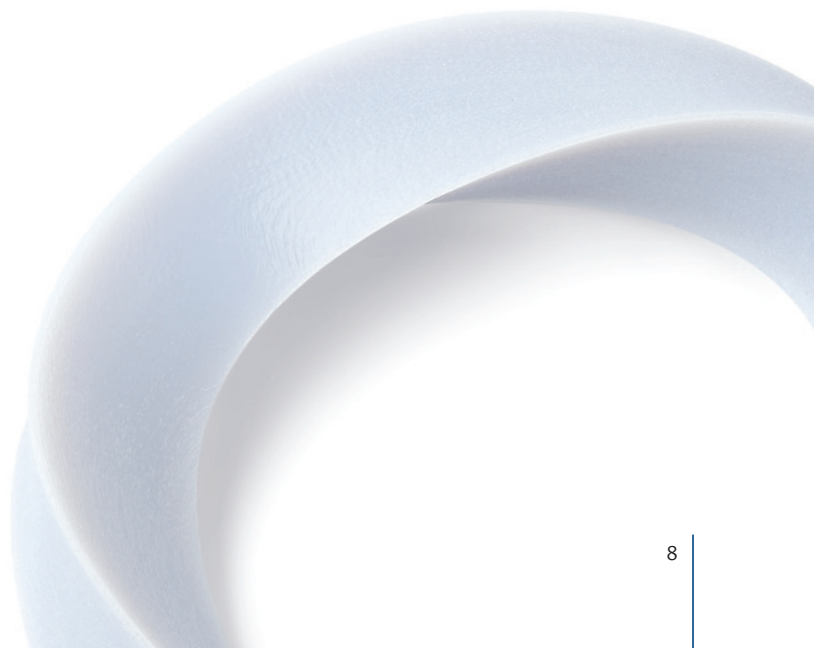
To prepare an external file for use by the Objet 3D printer:

- On the main menu bar select File>Save As. The Save As dialog box opens.
- In the Files of Type window select the extension (*.STL)
- Select Options and choose from the following:
 - Total Quality – default value of approximately 0.01.
 - Detail Quality – default value of approximately 4°.
- The lower the value selected, the more accurate the saved file, although the saved file is correspondingly larger.
- Resulting triangles should not be smaller than Z resolution of 0.02mm.
- Select an option and press OK.

3

Design of 3D Architectural Models

Print Size.....	3-8
Printing Small Features.....	3-9
Level of Details.....	3-10
The Support Structure.....	3-11



Print Size

Computer simulations and 3D printing of architectural models involve scaling down the original design. As a first step, the required printing size must be determined. In some models, it may be more practical to cut the 3D file into two or more models in order to fully fit it into the printing envelope. In those cases, it is recommended that the file be cut at the floor level (without the ceiling or roof), where minimum support structures would be used. In addition, the file should not be repaired but set-up only after the scale-down has been performed.

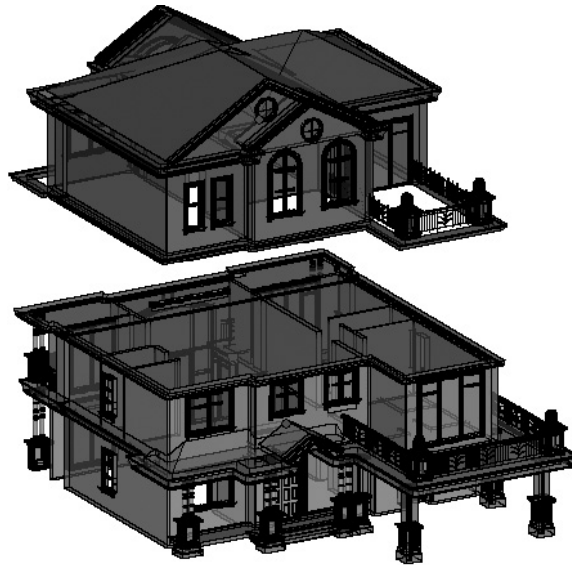


Figure 1: Divided model to fit the full printing envelope

Printing Small Features

A safe, yet dependable value for minimum feature size is in the region of 1.3 mm (0.050 inches) for features that carry no load. For features that have certain load applied, such as walls, window frames, or fences, a minimal feature of 2.6mm (0.1 inches) may be required.

As a general rule, one should aim to scale up all small features to the maximum allowed. Walls and external parts should be scaled to the greatest wall thickness possible.

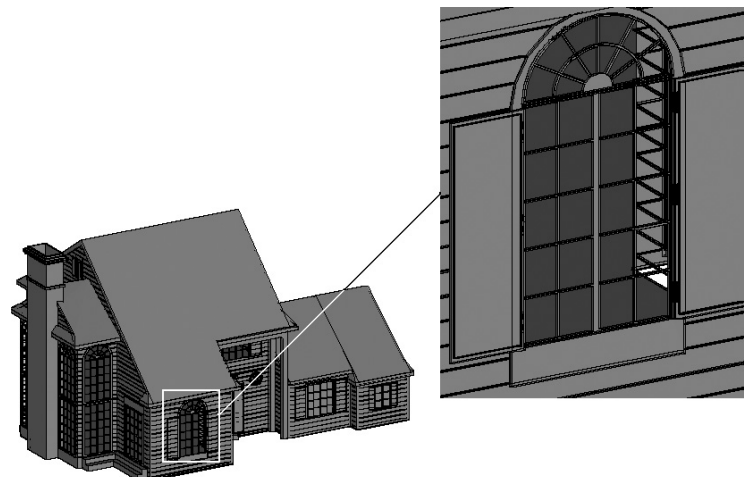


Figure 2: Printing small details

Level of Details

Printing scaled down models requires a scale-down of all the small details as well. The thickness of real house walls may end up being less than 1mm thick, after the scale-down to a factor of 1:1000. Consequently, small details such as windows frames, fences and skylight windows may become almost unnoticeable. Considering this, one should determine, in advance, what is the smallest detail that must be included in the printed model. This is an essential step towards achieving satisfactory printing results.

There are different ways to overcome the small details obstacle. Some design

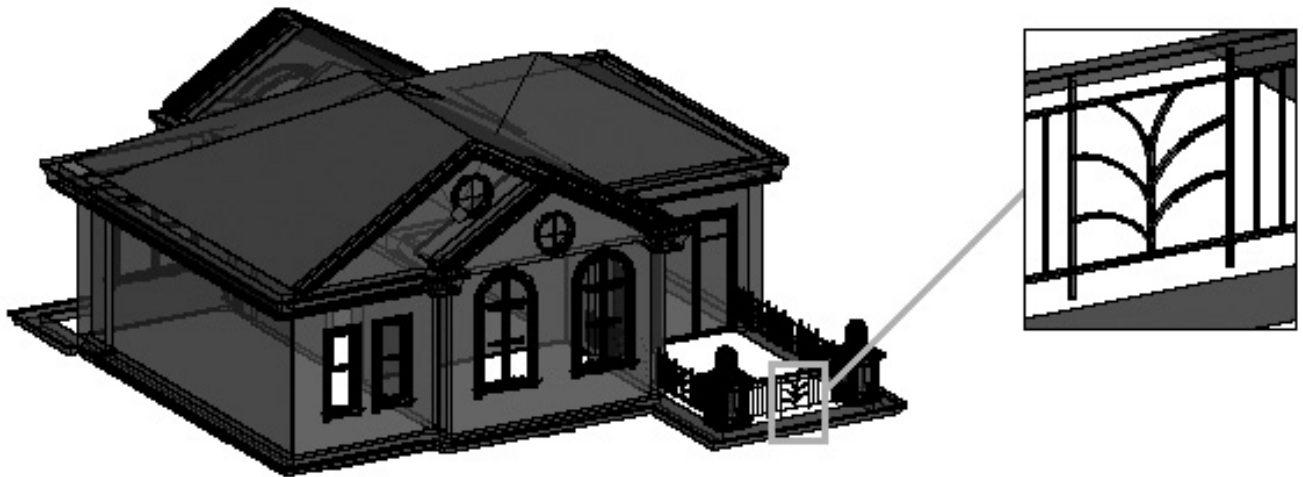


Figure 3: Determining the level of detailing

software can recognize small details automatically and thicken or enlarge them to the minimum required printable size. Other software packages require manual manipulations per each selected object. Also, depending on the software, you can define yourself what you consider as small and the Small Part Filter can remove small parts automatically. You can choose to remove all small parts or to manually remove selected shells.

The Support Structure

One of the major advantages of printing architectural models using Objet's technology is the usage of gel-like support structures that are automatically generated during the printing process. The support structure is easily removed using the WaterJet system which keeps small features and fine details intact by utilizing a straightforward and effortless cleaning system.

The printing of 3D architectural models results in solid models. Such models, illustrated in the figure below, can be turned into a hollow shell, with a minimum wall thickness of 4mm. In such a design, the inner core of this architectural model would be filled with support material, reducing model cost and weight (in certain cases, the support structure can be washed away).

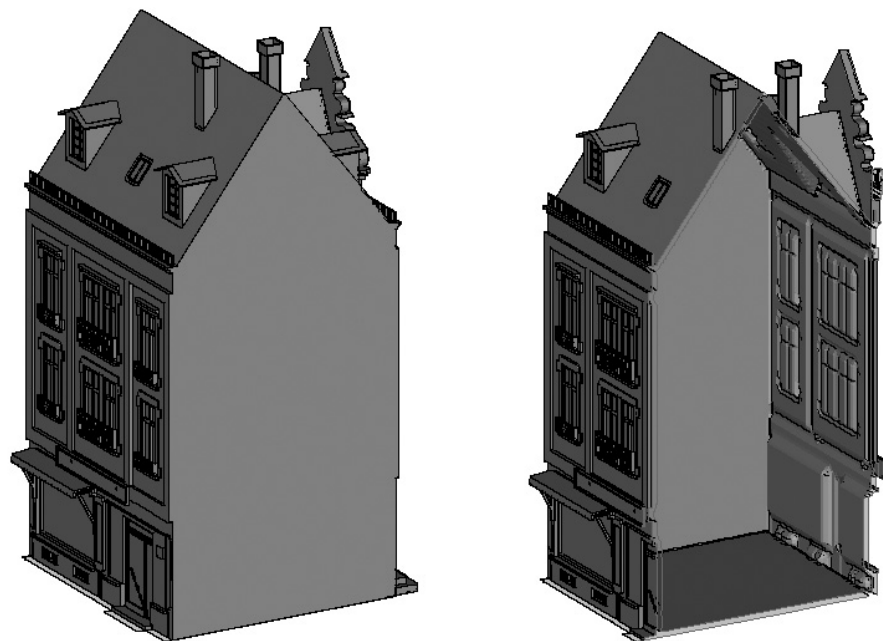


Figure 4: The hollow inside of a 3D architectural model

Special care must be taken while using the WaterJet to clean the support structure of architectural models. In order to maximize the effectiveness of the cleaning process, the WaterJet unit was designed to include two types of diza elements - the jet diza and the spray diza. Each has its own unique ability to help increase productivity, shorten cleaning time, and meet high-quality requirements.

To clean large parts that do not include thin walls or fragile parts, the jet spray is recommended. The jet diza can be used in the same way as a specula to cut and trim large support structure areas and wash them away. The jet diza is also very efficient and effective at cleaning cavities as it clears excess material from holes.

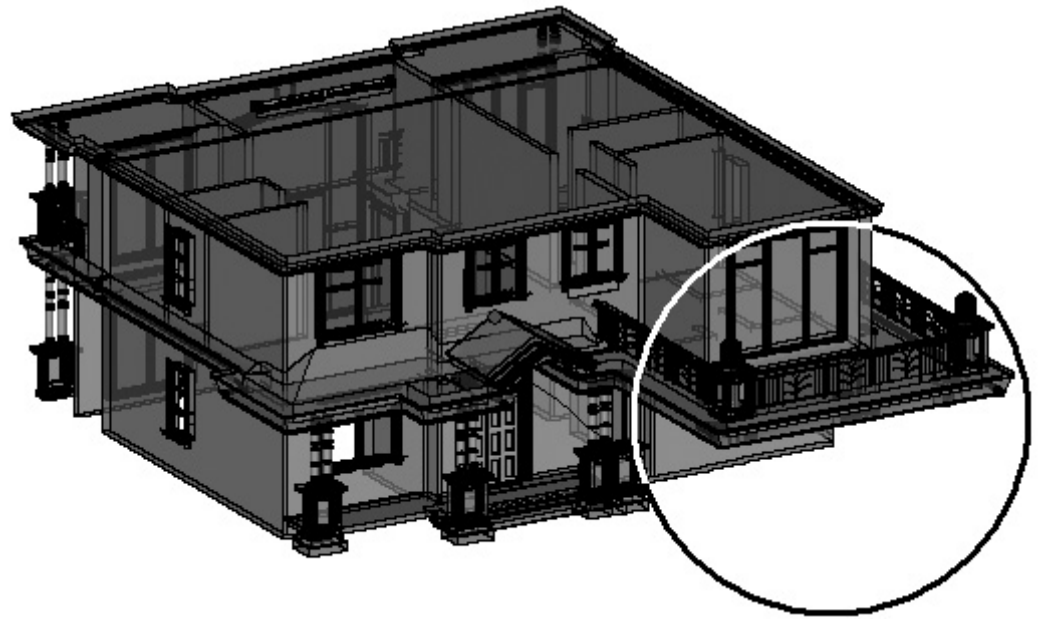


Figure 5: Construction of a long-overhang roof

The spray diza is more suitable for cleaning detailed parts with thin walls or fragile, delicate and breakable sections. Parts that should be cleaned using only the spray diza are small details such as window frames, fences and skylight windows.

An additional support structure issue may be involved while building models that include non-supported construction, such as an extended roof overhang covering the entrance to a building (see figure below). Once printing is completed and the architectural model is cleaned, such a roof could bend under its own weight. This bending can be prevented by printing a supporting part to hold and restrain the overhang.