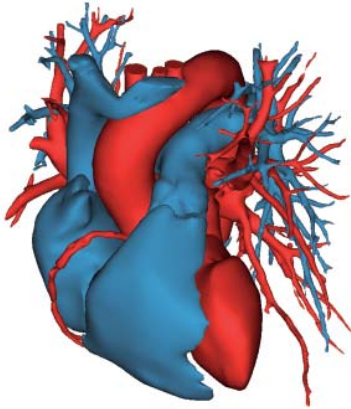
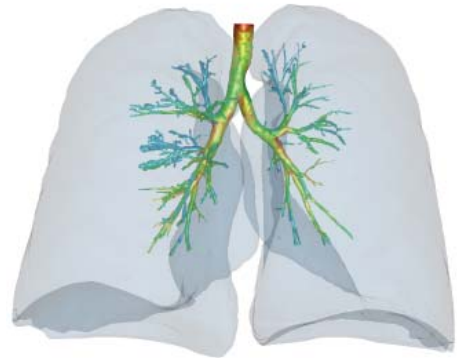


Innovative Solutions for Biomedical R&D

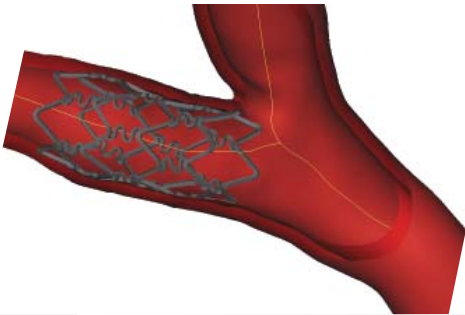
Take your CT & MRI data to the next level



*3D Visualization and
Verification*



*Analyses, Measurements and
Link to FEA / CFD*



*Custom Implant or Guide Design
and Surgical Simulation*



*RP Modeling and
Reverse Engineering*

Mimics Innovation Suite

Materialise is dedicated to offering you a total solution for advancing your biomedical research and development. The **Mimics Innovation Suite** is a platform that encompasses a variety of products and services tailored to challenges encountered in the biomedical field. From scan data to visualization and beyond, our solutions are powerful tools for taking your R&D to the next level.

Mimics Innovation Suite

The suite is a complete solution comprised of three strong tools:

- Mimics – medical image processing software
- 3-matic – geometry preparation, design and optimization software
- Engineering services, consultancy and custom development

With two new releases per year, the Mimics Innovation Suite is under constant development to stay on the cutting edge of technological advancements.

Mimics: Medical Image Processing Software

Mimics software allows you to transform CT & MRI data to 3D with the utmost accuracy and flexibility in an extremely user-friendly environment. With it you can perform a variety of design and engineering operations directly on 3D patient data.

3-matic: Design, Geometry Preparation and Optimization Software

3-matic is forward engineering software that enables you to design directly on your Mimics files in addition to STL, CAD or point cloud data. In addition, 3-matic has powerful analysis and remeshing tools allowing you to process even the most complex cases. Why go in reverse, when you can go forward?

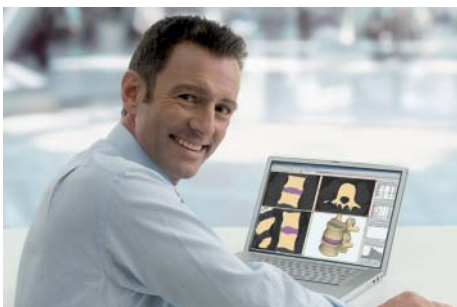
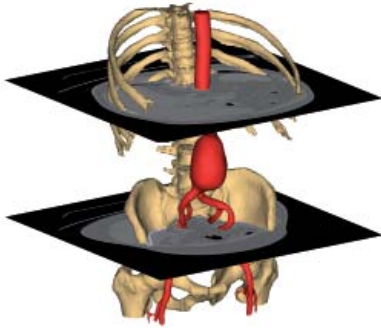
Engineering Services and Consultancy

Our team of experts is at your disposal to save time and reduce costs by performing the desired engineering and design operations for you. Materialise can also automate your process by developing a customized software solution.

Made by Materialise

Materialise started out as a specialist in rapid prototyping and manufacturing in 1990 and has been active in this market since the beginning of RP&M commercialization. Based on this knowledge, and its acquired expertise in biomedical engineering software solutions, Materialise is the perfect partner for those who are involved in cutting-edge, innovative biomedical R&D. The company has acted as a pioneer in many fields and has been investing for years in advancing research. Materialise has the largest development team in the sector. With 800 people employed in several subsidiaries in Europe, Asia and the USA, we speak your language. Contact us via mimics@materialise.com.

Mimics, Materialise, and other names mentioned in this flyer are registered trademarks and/or trade names owned by Materialise. No user has any right, title, or interest in those marks or names not previously expressly granted in writing to such user by Materialise.



Data courtesy
Helmholtz Institute Aachen, AME, Germany
IBiTech and the Centre of X-Ray Tomography, Ghent University, Belgium
FluidDA, Antwerp, Belgium
P.J. Antunes, University of Minho, Portugal
Dr. Stephen Rouse, Walter Reed Army Medical Center, USA

